

sima REVIEW

Vol. - XXXI No. 2



sima
February
2026

In this Issue...

Texfair 2026



Highlights of Texfair 2026 | 11

Sima AiTex Summit - Abstract | 15

Raw Material Scenario | 35

MYLON Yarn Conditioning Plant CUBICAL FLOOR MOUNTED



Yarn Conditioning Plant
200 - 2000 Kgs / Batch



- ▶ No Need for a PIT
- ▶ Flexible to Suit your Existing Layout
- ▶ Can be Shifted / Relocated Later.

Mylon Metallics Pvt. Ltd.

(F):SF 38/2, Arasur, Near LMW Foundry Division, Coimbatore 641 407

(O):46, Bharati Nagar, Peelamedu, Coimbatore 641 004

T: +91 98947 56798 / 90470 22798 E: mylonmetallics@gmail.com

AUTOTEX

THINK
PERFORMANCE
RELIABILITY
SAFETY

AUTOTEX - BLS

The World's First Bobbin Holder with
Bobbin **L**ocking **S**ystem.

BLS ensures **PRS**
Performance | Reliability | Safety^y

Tested and Trusted,
Globally...

Warning to Copycats

AUTOTEX products are Patented.
Infringers stay away



100 MILLION
BOBBIN
HOLDERS

HISTORY HAS BEEN MADE
THANKS
FOR YOUR TRUST

www.autotex.net

CONTENTS

Volume : XXXI
Issue No : 02
Month & Year : February 2026

Editor :
Dr K Selvaraju, Secretary General
The Southern India Mills' Association
"Shanmugha Manram,
41 Race Course
Coimbatore - 641018

- 11 Texfair 2026
15 Sima AiTex Summit - Abstract
24 Foreign Trade Performance
32 Index of Industrial Production
35 Raw Material Scenario
36 Gleanings from the Press

NEW INDIA BRUSH INDUSTRIES



**MANUFACTURERS & EXPORTERS
ALL KINDS OF TEXTILE BRUSHES**

TRY OUR BRUSHES AS TRIAL & BE INSPIRED WITH EXCELLENT QUALITY @ UNBELIEVABLE PRICING AND GUARANTEED SERVICE. WE ASSURE YOU WILL COME BACK FOR MORE



📍 #140, N.V.N. LAY-OUT, NEW SIDDHAPUDUR, COIMBATORE - 641 044. INDIA 🇮🇳
www.nibibrush.com | ecovalleyview@gmail.com ☎ 91 98422 49234 / 94882 49234



Anjali

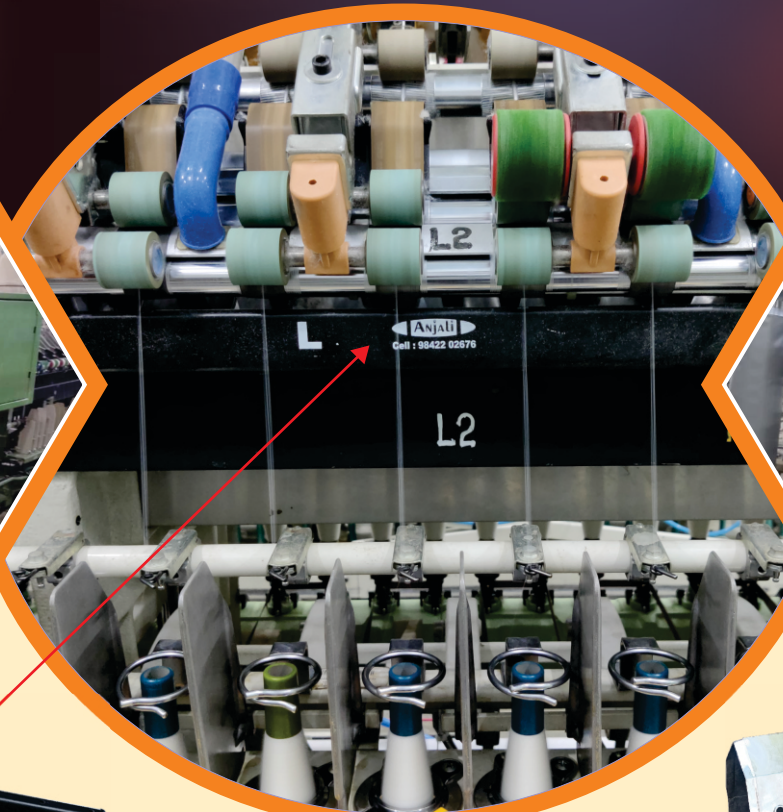
Ph : 0422 - 2667876

Cell : 98422 02676

94426 02676

ANJALI TEXTILE ENGINEERS

✉ anjutextile@gmail.com 🌐 www.anjutextile.com



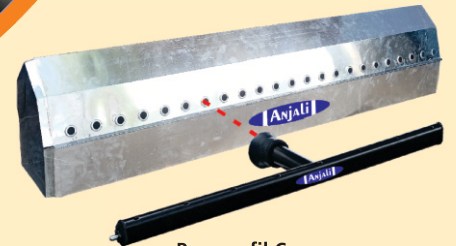
25% SUCTION INCREASE



Per Day 30 UNIT POWER SAVE PER MACHINE



Pneumafil Individual Type Duct Conversion for Common Suction Pipe



Pneumafil Common Suction Type Duct & Pipes

PNEUMAFIL GROUP SUCTION PIPE WITH FAN BOX CONVERSION

POWER SAVING AND SUCTION IMPROVEMENTS LR6s / G5/1 LR60A, LRJ9 AXL, LR9 AXL Reiter Ring Frame and KTTM All Compact Spinning Ring Frame (1200 Spindle)

SUCTION and POWER SAVING DETAILS

CONVERSION

BEFORE

Old Suction Pipe, Fan & Motor

OE	100 mm
MD	70 mm
GE	45 mm

Old Suction Pipe and Fan - 6 Ams
3.88 Units Per Hour

Per Day 2.26 X 23.5 Hrs. = 53 Unit Power Saving

Per Month 53 x 30 Days = 53 x Unit Cost Rs. 9/-

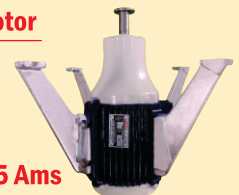
AFTER

Anjali Suction Pipe, Fan & Motor

OE	120 mm
MD	90 mm
GE	65 mm

Anjali Suction Pipe and Fan - 2.5 Ams
1.62 Units Per Hour

50% POWER SAVE



50% Power Saving Pneumafil Motor



Power Save Pneumafil Impeller



OHTC Filter Box

Saving Rs. 14,310/- (Approx) PER MONTH (Per Machine)

FX-₹etail

Online Forex Dealing Platform

Authorised by RBI

Category	Rate	Order Type	Quantity
SPOT	76.2700	BUY	500,000.00
Interbank SPOT	76.2800	BUY	500,000
YOU SELL	76.2775	SELL	1,000,000.00
YOU BUY	76.2775	BUY	500,000

Term	YOU SELL	YOU BUY	Settlement Date
CASH	76.2625	2725 76.	19-Apr-2022
TOM	76.2575	2700 76.	20-Apr-2022
EndApr22	76.3275	3475 76.	30-Apr-2022
EndMay22	76.6025	6225 76.	31-May-2022
17May22	76.5150	5350 76.	17-May-2022
EndJun22	76.8525	8725 76.	30-Jun-2022



Order Entry

SPOT TOM CASH FORWARD INDIAN POST PAYMENTS BANK LIMITED

DAY IOC GTC

LIMIT MKT SL TP

Order Quantity: 0.01 Limit Price: 76.2775

Limit Available: 8,421,000.00

Prices shown are not inclusive of bank mark-up

**Deal with ease on
BEST & TRUSTED
Forex Trading
Platform**

**Deal
Forex Online**



www.fxretail.co.in



A market based solution for Importers, Exporters, MSMEs, Corporates, FPI, NRI etc.



Web-based platform for dealing in USD / INR



Better pricing & Full Transparency



Real-time access to Forex Market Rates



Savings in Forex Conversion Cost



Buy / Sell USD with Multiple Banks



Easy Registration Process



Clearcorp Dealing Systems (India) Ltd.

A wholly owned subsidiary of The Clearing Corporation of India Ltd.



1800 266 2109 / 022-61546313



supportfxretail@ccilindia.co.in



Never let cashflow stall your production Mid-Stitch



A cashflow stall can seriously disrupt the day-to-day flow of your business.

Vivriti Capital ensures you never run out of threads by bridging short-term funding gaps, keeping your operations seamless and your business growing.

Unlock your business potential with:



Debt funding
up to ₹70 Cr



Fast-track disbursement
within 2 weeks



Industry-specific
due diligence



Seamless
onboarding

 **+91 9849018920**
 **Soumya.Singharoy@vivriticapital.com**
 **www.vivriticapital.com**

Scan here
for the liquidity
your business
needs





LEGAL ENTITY IDENTIFIER INDIA LIMITED
A Wholly Owned Subsidiary of The Clearing Corporation of India Limited



Who is the authorized LEI issuer in India?



Think LEIL - the only RBI authorized LOU in India

**All corporate entities with borrowings
of Rs 5 Crores and above must obtain LEI by
April 30, 2025, as per RBI mandate**

**Secure your LEI from LEIL
and take the first step towards transparency,
regulatory compliance, and global reach.**

**Apply for LEI with LEIL now!
Visit www.ccilindia-lei.co.in for more details**

**To register for legal entity identifier code,
call Toll Free 1800 210 6990 or Email: lei@ccilindia.co.in**



ReNfra EnerGy®

CLEAN ENERGY FOR A GREENER FUTURE

POWERING THE FUTURE OF RENEWABLE ENERGY

SOLAR & WIND TURNKEY EPC SOLUTIONS

ONGOING WIND PROJECTS

82.5 MWp

WIND - PIPELINE

200 MWp

ON-GOING SOLAR

100 MW

SOLAR INSTALLED

0.65 GW

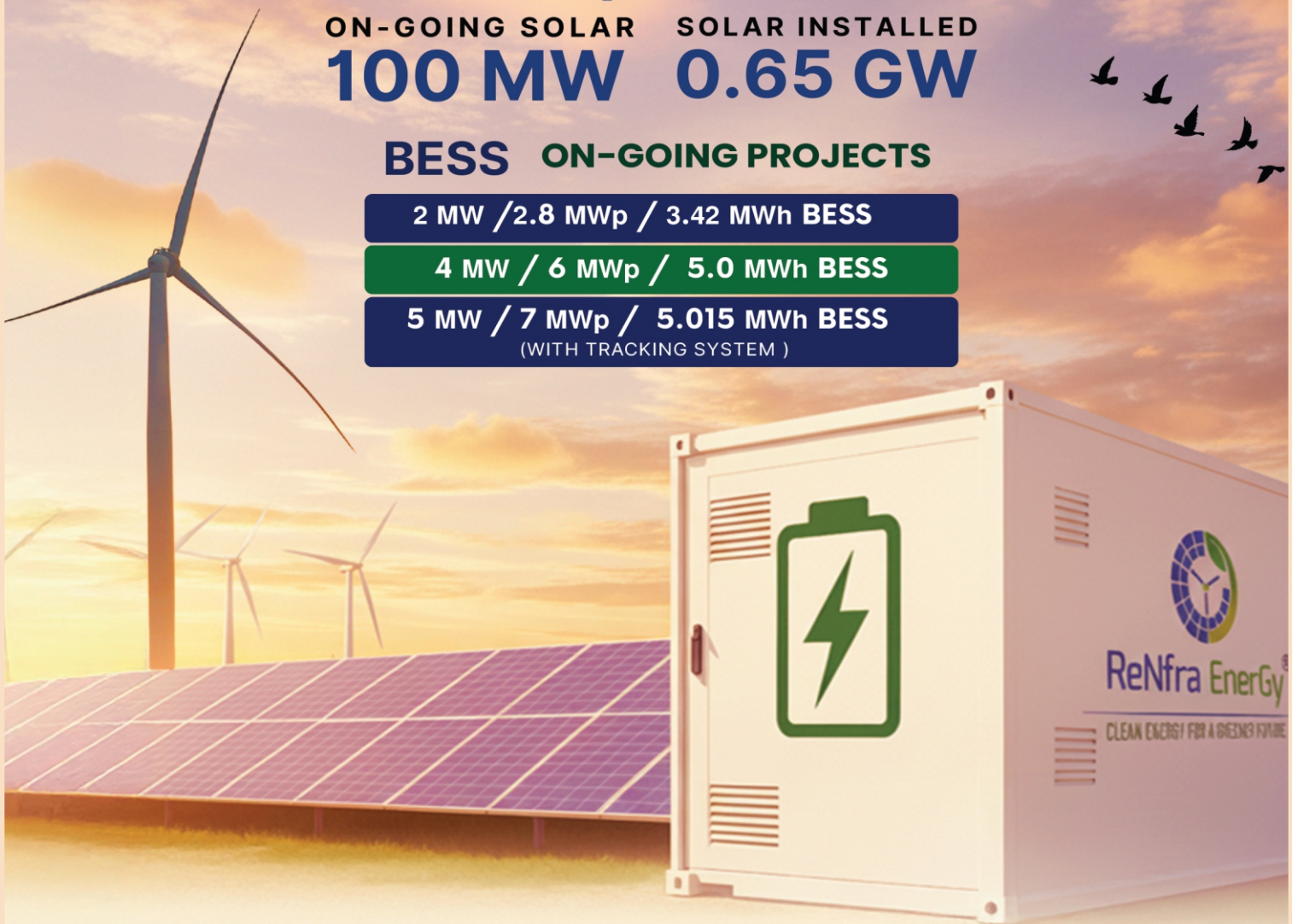
BESS ON-GOING PROJECTS

2 MW / 2.8 MWp / 3.42 MWh BESS

4 MW / 6 MWp / 5.0 MWh BESS

5 MW / 7 MWp / 5.015 MWh BESS

(WITH TRACKING SYSTEM)



VISWANANTHAN.M
A.G.M MARKETING

+91 70944 88912
vnm@renfraenergy.com

+91 70944 88909
gpk@renfraenergy.com

GOWTHAM PRABHU.K
A.G.M MARKETING

ONE PARTNER, EVERY SOLUTION

From rooftops to utility-scale solar & storage

Hybrid Inverters
up to 250 kVA

TOPCon Panels
up to 595 W

BESS up to
Industrial Requirements



On-grid Inverters
up to 350 kW



One Manufacturer

Panels, Inverters,
Batteries & more



One Stop Service

Finance, Designing,
Installation



One Call Away

6000+ Tehsils Coverage,
2000+ Solar Doctors

38+ Years Experience | 7 Manufacturing Units | 36+ Countries | 60,000+ Channel Partners



Friends,

It is a pleasure to inform that Texfair 2026 had an overwhelming response with 240 exhibitors from Tamil Nadu, Mumbai, Ahmedabad, Bangalore including several exhibitors from Switzerland, Germany, Italy, China, Egypt, etc., who showcased their products catering to various segments of the textile industry and services in 260 stalls. I thank Shri P R Venketrama Raja, Chairman, Ramco Group for accepting our invitation and inaugurating SIMA Texfair 2026, an International Textile Machinery, Spares & Accessories Exhibition, 15th edition in its series, conducted by the Association for the benefit of the textile manufacturers, at CODISSIA Trade Fair Complex, Coimbatore during March 6 - 9, 2026. I am also thankful to Shri Ashwin Chandran, Chairman, Confederation of Indian Textile Industry, Shri S Suresh Babuji, Director & Head of Office MSME Department, Shri Shaleen Toshniwal, Chairman, Manmade and Technical Textiles Export Promotion Council, Shri Prashanth Agarwal, JMD, Wazir Advisors, Shri K R Kanagarajan, President, ITMAA, Shri Omprakash Mantry, President, ITAMMA and Shri Prashant Mangukia, Chairman, TMMA for their active participation. Also, I thank the Office - Bearers and Committee Members of various Associations for their august presence in the event.

It is noteworthy to mention that the textile mills across the country and also many from abroad benefited out of the fair. Personnel from the management and executive cadres visited the fair in large numbers and had quality interactions with the exhibitors. We look forward to have the continued support and patronage from all the stakeholders in all our future endeavours.

On the sidelines of TEXFAIR, the Association organized SIMA AiTex Summit on 6th March 2026 at the CODISSIA Trade Fair Complex. The summit highlighted how Artificial Intelligence (AI) and automation are transforming textile manufacturing by enhancing productivity, ensuring consistent quality, reducing manual intervention & waste and enabling predictive maintenance. The learning from the Summit is that integrating AI with ERP systems, intelligent data extraction and real-time analytics can convert traditional experience-based processes into structured, data-driven systems. Adoption of digital technologies to improve efficiency, strengthen global competitiveness and build a resilient, future-ready textile industry is imminent. With strong momentum across green textile initiatives and MSME support, the ecosystem is aligning toward scale, sustainability and efficiency. At the same time, brands and platforms are accelerating growth through digital expansion and faster market reach. The message is clear that those who invest in technology, efficiency and adaptability will lead the next phase of industry growth. The highlights of Summit are featured in this edition.

By way of budgetary announcement, the Government of India has introduced the Textile Expansion and Employment Scheme (TEEM), aimed at providing financial support to the textiles and apparel sector for capacity expansion through state-of-the-art technology, employment generation, achievement of sustainability goals and enhancement of global competitiveness. Cluster development has also been

From the Chairman

identified as a key focus area under the scheme. In the TEEM stakeholders meeting it was informed that spinning segment had not been considered owing to excess capacity.

Given the current market dynamics, the industry is operating with over 25% excess capacity across the value chain, while only about 25% of the machinery is less than 10 years old. Adoption of modern technology is critical, as advanced machinery can significantly reduce power consumption and manpower requirements while improving product quality. In this context, we have strongly urged the Government to adopt a holistic approach by including all segments of the value chain particularly Ginning, Spinning and Power Looms under the TEEM scheme to ensure balanced and sustainable growth of the industry.

The global environment remains highly volatile. The ongoing geopolitical tensions, particularly the U.S., Iran-Israel conflict have significantly impacted global trade dynamics. The disruption of key shipping routes, rising crude oil prices and increased insurance and freight costs have collectively escalated logistics costs for exporters.

Considering the prevailing issues, the Association has requested the government to address the short supply of LPG to the industry and extension of RoDTEP scheme for the exporters beyond 31st March 2026 for a considerable period of time in line with the duty drawback scheme.

Indian Textiles exports during February 2026 registered a degrowth of 0.31% to US\$ 1,677 Million, Apparel exports too fell by 9% to US\$ 1,403 Million. During April - February 2026 cumulative T&A exports stood at US\$ 32,887 Million, lower by 1% from a year earlier, as textile exports fell 2.17% to US\$18,355 Million while apparel exports stood at US\$ 14,532 Million. T&A accounted for 8.16% of India's total exports in April - February 2026, lower than 8.40% a year earlier, reflecting continued global demand volatility.

Adding to these challenges, the United States has raised an issue regarding global overcapacity, particularly from Asian countries including India and has initiated investigations across multiple countries, with the objective of reducing reliance on oversupplied imports and promoting domestic manufacturing. The Association has been working on the subject to justify that growth in exports and domestic production is stagnated, with a clear indication that there is increased domestic consumption, thereby justifying that there is no over-capacity in production or over - supply to the U.S. market from India, thus preventing the proposals that may rise for imposition of tariffs or dumping duties on Indian exports in future.

I am confident that with the collective efforts of all stakeholders, the Indian textile industry will not only overcome the current challenges but will also emerge stronger more diversified and globally competitive.



Durai Palanisamy
Chairman

SIMA Texfair 2026 - An expo enabled the entire textile value chain to explore technology, networking and industry growth



The Southern India Mills' Association (SIMA), Coimbatore organized Texfair 2026, 15th of its kind. The largest Expo for Textile Machinery, Accessories, Spares and other supporting services during March 6-9 at CODISSIA Trade Fair Complex, Coimbatore. Texfair 2026 has once again reinforced the importance of technological innovation and collaboration in strengthening India's textile industry the four-day Exhibition brought together Manufacturers, Suppliers and Industry experts from across India and abroad to showcase the latest developments in Textile Machinery, Accessories and Spares. The event featured over 240 exhibitors and 260 stalls, with participants from Coimbatore, Mumbai, Ahmedabad, Bangalore, etc., including several exhibitors from Countries such as, Switzerland, Germany, Italy, China, Egypt, etc.

At the inaugural function of Texfair 2026 held on 6th March 2026, SIMA Chairman, Shri Durai Palanisamy welcomed the Chief Guest Shri P R Venketrama Raja, Chairman, Ramco Group, presided over by Shri Ashwin Chandran, Chairman, Confederation of Indian Textile Industry, Guests of Honour, Shri Suresh Babuji, IEDS, Head of Office, MSME Development and Facilitation Office; Shri Shaleen Toshniwal, Chairman, Man-Made and Technical Textile Export Promotion Council;



Shri K R Kanagarajan, President, ITMAA, Shri Omprakash Mantry, President, ITAMMA, Shri Prashant Mangukia, Chairman, TMMA and key note speaker Shri Prashant Agarwal, Joint Managing Director, Wazir Advisors to the inaugural function.

SIMA Chairman, stated that the Central Government should remove the import duty on cotton and increase the Remission of Duties and Taxes he said. Presidents of ITMAA, ITAMMA and TMMA offered felicitations.

Chairman of Ramco Group, Shri P R Venketrama Raja in his inaugural address, he said the four-day event is important as it showcases technologies that are available to bring down costs. In the last few years, the textile mills facing demand volatility, margin pressure and a constant need for investments. In the coming decade, the mills should focus on speed and responsiveness, quality and consistency, sustainable production, operation efficiency and productivity.

The Indian textile and apparel sector is targeting \$350 Billion business size by 2030 and this needs sustained



SIMA Deputy Chairman, Shri S Krishnakumar briefed about SIMA Texfair 2026.



investments in advance machinery, digitization, automation and smart manufacturing systems said Shri Ashwin Chandran Chairman of the Confederation of Indian Textile Industry. Sustainability is a defining trend, it is essential for long term business and involves costs. Businesses should look at it as long term investment he added.



Shri Shaleen Toshniwal,

Chairman, Manmade and Technical Textile Export Promotion Council, said that 70% of global textile business is in the manmade fibre sector as it gives comfort to the users and performance. Technical textiles that uses MMF also has multiple applications. The technical textile industry in India is expected to grow \$50 Billion by 2030.





Joint Managing Director, Wazir Advisors, Shri Prashant Agarwal spoke on the benefits of the India's Free Trade Agreements with the UK and the European Union. The buyers in these Countries are looking at alternatives to China and the Indian companies should offer scale and automation.

Shri S Suresh Babuji, IEDS, Director of



MSME Development and Facilitation Office, said the Central Government is setting up a tool Centre in Coimbatore on 14 acres and it will be helpful for the MSMEs in the engineering sector. This Centre will be operational in two years.

Coinciding with the Texfair 2026, SIMA organized, SIMA AiTex Summit on 6th March 2026 at CODISSIA Trade Fair Complex. Artificial Intelligence (AI) and automation are revolutionizing textile manufacturing by improving productivity, enabling production



Vice-Chairman Shri K Sivaraj delivered vote of thanks.

of high value products with consistent quality, reducing manual intervention and waste and facilitation predictive maintenance. SIMA Chairman, Shri Durai Palanisamy said, by leveraging AI, ERP integration, intelligent data extraction and real-time analytics, manual, experience - driven processes can be transformed into structured and data - driven systems. He also stated that the Summit underscored the need for widespread adoption of AI and digital technologies in the textile industry to enhance efficiency, strengthen competitiveness and build a resilient and future ready manufacturing ecosystem.

The expert sessions at the summit covered several key topics, including Leveraging Data and AI Technology for Overall Excellence, LMW e-Spares ERP Integration and Tracker, centralised ERP-integrated tool that captures forex exposures and maps them against hedge contracts to provide real-time visibility and improved financial risk management. Other sessions focused on Digital and Operational Automation in Textile Mills with EXIM Automation and Trade Compliance, Cotton Testing through HVI and AFIS Data Integration, Dispatch Entry Automation, and practical success stories on transforming spinning production from data to decision-making.

We thank all the exhibitors for showcasing their products and services, Top Management of the Industry and CEOs of mills for visiting and deputing their technical personnel and also visitors from various textile clusters across the country and making the Expos yet another success event.

Apart from machinery displays, the fair served as an important networking platform where Manufacturers, Suppliers, and Buyers exchanged ideas and explored new business opportunities. With an expected footfall of around one lakh visitors, the exhibition facilitated knowledge sharing and strengthened collaboration within the textile ecosystem.

Glimpses of Texfair 2026





sima AiTex Summit

Transforming Textile Manufacturing through Automation

SIMA AiTex Summit showcases successfully implemented automation solutions that help the textile industry enhance productivity, reduce production costs, and improve operational efficiency across the value chain. By leveraging AI, ERP integration, intelligent data extraction, and real-time analytics, these initiatives transform manual, experience-driven processes into structured, data-driven systems- delivering better quality control, stronger compliance, optimized resource utilization, and an improved overall experience for all stakeholders, from procurement and production to finance and management.

SIMA AiTex Summit 2026 - Abstract

SIMA AiTex Summit 2026 first of its kind held on 6th March, 2026 at CODISSIA Trade Fair Complex, Coimbatore, coinciding with the inaugural function of SIMA Texfair 2026.

Inaugurating the event, SIMA Chairman Shri Durai Palanisamy emphasised that integrating AI with ERP systems, intelligent data extraction, and real-time analytics can convert traditional experience-based processes into structured, data-driven systems, and underscored the importance of widespread adoption of digital technologies to improve efficiency, strengthen global competitiveness, and build a resilient, future-ready textile industry. The highlights of Summit are as follows.



Glimpses of SIMA AiTex Summit



Session on "Leveraging Data & AI Technology for Over Excellence"
by Mr Saravanan Ramanujam, Principal Industry Business Development - Manufacturing Amazon Web Services and Mr Sreevighneswaran, Manager, Petrus Technology.



Session on "LMW Limited Unveils Seamless ERP Integration with Customer Portal" by Mr Mathan Mohan C S, Head & Components Business, LMW.



Session on "Forex Hedging Solution" by Mr Subramanian Sharma, Director, Greenback.



Session on "Digital and Automation in Textile Mills" by Mr Vaishak, Founder, Leverageaxiom.



Session on "From Data to Decisions in Spinning Production" by Mr. T Mani - Founder & CEO, Kalpatharu Software Limited.

Benefits to the Spinning Industry

- ✧ 50% Savings in time for order processing
- ✧ Zero Manual Entries and elimination of repetitive tasks
- ✧ Digital approvals can be configured in mill ERP with transparency and traceability
- ✧ Error-Free Operations from requisition to shipment

Conclusion

This ERP-LMW portal integration marks a decisive step toward digital transformation in the textile spinning industry, delivering efficiency, accuracy and agility. By bridging mills' ERP systems with LMW's ecommerce portal, the initiative empowers spinning mills to operate smarter, faster and with greater confidence in their partnership with LMW.

Session on Forex Hedging Solution - Greenback

- ✧ **Speaker: Mr. Subramanian Sharma** - Director, Greenback (Chartered Accountant | 30+ Years Experience)
- ✧ **Overview:** A centralized ERP-integrated tool captures forex exposures and maps them against hedge contracts, providing real-time visibility and improved financial risk management.

Problems Faced by Corporates in Forex Risk Management

Corporate treasury teams often face multiple operational and strategic challenges while managing foreign exchange exposure and interest rate risks. Some of the key issues include:

Fragmented Data Sources

- ✧ Treasury data is often spread across ERP systems, spreadsheets, and banking platforms.
- ✧ Lack of centralized visibility makes monitoring exposures difficult.

Limited Real-Time Visibility

- ✧ Corporates struggle to obtain real-time information on exposures, hedges
- ✧ Delayed data leads to slower decision-making.

Manual Processes and Human Errors

- ✧ Exposure tracking, hedge monitoring and reporting are often done manually.
- ✧ Heavy reliance on spreadsheets increases the risk of errors and inconsistencies.

Difficulty in Monitoring Risk Management Policies

- ✧ Ensuring compliance with Forex risk policies, benchmarks, stop losses and hedge ratios is challenging without automated monitoring.

Inefficient Reporting to Management

- ✧ Preparing treasury reports for management and stakeholders requires significant time and manual effort.

Lack of Integrated Market Intelligence

- ✧ Treasury teams need to track FX rates, MTM of hedges, and exposure positions simultaneously, which is difficult without integrated tools.

Solution - Treasury Dashboard

A Treasury Dashboard is a centralized, automated platform that integrates corporate treasury data with real-time market information to provide actionable insights for decision making. This user-friendly interface and powerful analytics helps significantly enhance treasury workflows and hedging performance. Key capabilities include:

ERP Integration

- ✧ Automatic syncing of exposure and transaction data from ERP systems.

Centralized Exposure Monitoring

- ✧ Consolidated view of exposures and hedges across currencies and maturities.
- ✧ Monthly bucketed exposures and net hedge positions.

Real-Time Mark-to-Market (MTM)/ Market Data Integration

- ✧ Live MTM tracking of forex exposures giving insight into the actual P/L
- ✧ Market movements instantly reflected in treasury positions.

Risk Management Monitoring & Reporting

- ✧ Benchmarking exposures against treasury risk management policy.
- ✧ Ensures the appropriate core coverage is maintained with respect to Fx policy
- ✧ Automated alerts for Stop loss and Take profit levels
- ✧ Instant Reports can be sent to stakeholders and management

Interactive Visualization

- ✧ Customizable dashboards providing a bird's-eye view of treasury positions.
- ✧ Drill-down capability for deeper analysis of exposures and hedges.

Benefits of a Treasury Dashboard

Seamless Centralised Data Capturing

- ✧ Automatic syncing of Fx exposure and transaction data from ERP systems.
- ✧ Consolidated view of exposures and hedges across currencies and maturities

Improved Decision Making

- ✧ Converts raw company data into meaningful insights for treasury decisions.
- ✧ Enables faster response to market movements.

Cost Minimization / Error Reduction

- ✧ Automation reduces operational costs associated with manual compilation, tracking and reporting.
- ✧ Reduced manual intervention minimizes the risk of errors in exposure compilation.

Resource Optimization

- ✧ Treasury teams can focus on strategy, hedging decisions, and market analysis rather than data compilation.

Real-Time Risk Visibility

- ✧ Continuous monitoring of exposures, hedges, and real time MTM positions improves risk control.

Enhanced Governance and Transparency

- ✧ Regular reporting keeps management and stakeholders informed.
- ✧ Dashboard can be accessed anytime and anywhere across the globe

Better Policy Compliance

- ✧ Ensures treasury activities remain aligned with risk management policies.

Evaluation of Treasury Performance

- ✧ Various Settlement reports highlight the treasury performance in Forex risk management and help to bring improvisation in future transactions

Session on Digital and Automation in Textile Mills

The session was handled by Mr Vaishak, Founder, Leverageaxiom, covers how exporters and Manufacturers fully automate EXIM related workflow by eliminating the manual Excel tracking, missed obligation deadlines and ERP data gaps.

SIMA AiTex Summit

EXIM Automation & Trade Compliance:

- ✧ A centralized ERP-integrated platform enabling license-wise tracking and monitoring of export incentive schemes(AA, EPCG, RoDTEP, RoSCTL)

Cotton Test HVI and AFIS Data Integration:

- ✧ An intelligent extraction system that captures data from PDF reports generated by cotton testing machines, stores it centrally, and integrates with ERP-enabling better procurement decision-making.

Dispatch Entry Automation:

- ✧ Automated workflow engine that extracts shipment data from emails and attachments and posts it directly into the ERP in real time-improving traceability and reducing manual effort

How the system works:

- ✧ Bots Replace manual workflows by automatically downloading license documents from DGFT Website & BOE/Shipping Bills from the mail
- ✧ Powerapp for AI Driven document extraction and interactive dashboards
- ✧ Power BI & mailers for Summaries & Alerts.
Extraction accuracy sits at 99% and the entire flow runs with minimal manual intervention.

Incentive Tracker - Leverage Axiom Solutions

Incentive Tracker system is designed for Grasim customers who receive supplier incentives in the form of Annual Incentives, Monthly Incentives, Invoice Discounts, AEPS Scheme benefits and currently manage this through manual Excel tracking, physical files, and person-dependent processes.

What the system does:

- ✧ A Bot is designed to automatically capture dispatch data from emails using AI therefore minimal manual input needed.
- ✧ Consolidates packing list data and pushes it to a central SQL database(or any other DB used by client).
- ✧ Computes incentives receivable automatically based on the incentives captured in the App
- ✧ Maps credit notes 1-to-1 at invoice level based on PO.
- ✧ Reconciles directly with ERP to ensure no invoice is missed.
- ✧ Provides a live Power BI dashboard to track targets, receivables & discrepancies

The result is a fully automated, auditable incentive tracking system that replaces people-driven workflows with a structured, process-driven approach.

SIMA AiTex Summit

Session on From Data to Decisions in Spinning Production

Resource Person: Speaker: Mr. T Mani - Founder & CEO, Kalpatharu Software Limited

Topics Covered:

- ✧ AI-Based Cotton Mix Cost & Quality Predictor: AI model that predicts quality markers (CV%, CSP, waste %) and cost impact before production begins.
- ✧ AI-Based Power & Energy Cost Optimizer: Analyse feeder-level data to detect abnormal usage and recommend load optimization, reducing energy costs per kg of yarn.
- ✧ AI-Raw Material Bale Auto GRN via OCR: AI-powered OCR extracts bill data from supplier invoices for auto-integration into ERP, enhancing raw material control.

What is SPINNOVA?

SPINNOVA is a decision intelligence platform built for spinning mills. It connects to a mill's existing ERP system, reads the data already recorded there and uses Artificial Intelligence to convert that data into clear, daily operational recommendations for the management team.

It does not replace the ERP. It does not require new machinery or sensors. It works entirely on data the mill already generates.

In simple terms: the ERP records what happened. SPINNOVA tells your team what to do next.

SPINNOVA operates in recommendation mode at all times. The AI suggests. The management team decides. Always.

The Challenges it Addresses

Spinning mills today collect more data than ever - yet most critical decisions are still made on experience and instinct. As mills grow in scale and margins tighten, this gap between data and decision needs to close. The common pain points SPINNOVA addresses are:

- ✧ Cotton mix decisions made on experience, with cost and quality impact visible only after production begins.
- ✧ Energy costs (15-18% of conversion cost) tracked as a single combined number, masking departmental inefficiencies.
- ✧ Production stoppages analysed after the shift ends - by which point, the loss has already occurred.
- ✧ Finished goods aging quietly tying up working capital with no early warning.
- ✧ Manual data entry in processes like raw material GRN, introducing errors that affect inventory accuracy.

SIMA AiTex Summit

How SPINNOVA Works

Every SPINNOVA deployment follows a structured five-step framework. A specific operational problem is identified. A performance baseline is frozen from actual ERP data - no assumptions. The KPI formula is locked before AI deployment begins. The AI then goes live in recommendation mode. Finally, results are measured daily against the frozen baseline, with every finding traceable to the mill's own ERP records.

Each use case is operational within four weeks - one week to scope and agree the KPIs, one week to validate data and freeze the baseline, one week for AI recommendations to go live, and one week to measure and document KPI movement. By the end of four weeks, the mill has a clear, evidence-based picture of what has improved.

Pilot Results - Four SIMA Member Mills, Four Weeks

Five use cases were piloted across four mills. All baselines and all results were measured from ERP data. No projections. No estimates.

Cotton Mix Optimisation - AI recommended the optimal cotton mix each morning before production began, evaluating hundreds of combinations against fibre parameters, lot cost, and quality targets. Mixing cost reduced by ₹0.79 per kg. Yarn unevenness fell below the SITRA norm of 12%. Waste reduced by 40%. Saving: over ₹2 lakhs per month.

Production Loss Intelligence - AI classified every recorded stoppage as avoidable or unavoidable, ranked by production impact, and delivered a daily priority action list to supervisors before each shift. Avoidable loss fell from 5.41% to 1.91% - a 65% reduction, reaching industry best-in-class. Stoppage time reduced by 23 minutes per frame per day. No new machines. No additional staff.

Energy Cost Optimisation - When AI separated ring spinning energy from vortex spinning energy, it revealed ring spinning was running 49% above industry best - hidden inside a combined figure. Energy cost per kg reduced from ₹7.66 to ₹7.19, a 6.1% improvement in four weeks.

Raw Material GRN Automation - AI read supplier invoices directly and auto-populated ERP GRN fields, with the team validating before approval. Entry time per GRN reduced from 20 to 15 minutes. Manual errors fell by 33%. Inventory records became clean from the moment each bale entered the gate.

Finished Goods Inventory Optimisation - AI scanned the full finished goods inventory daily, classified stock by aging risk, and generated a daily dispatch priority list. Finished goods aging (stock beyond 35 days) reduced from 60% to 32.8% - a 45% improvement. Blocked working capital fell below baseline.

Three Things Worth Knowing

- ✧ SPINNOVA runs on data the mill already has. No new infrastructure is required.
 - ✧ Results are measurable within four weeks. This is not a long-term IT project.
 - ✧ The AI recommends. The mill's team decides. There is no automation of operational choices.
- The mills that will lead tomorrow are those that use their own data - more intelligently, every day.

Foreign Trade Performance

India's textile & apparel exports fell 1% to \$33 Bn in April-February 2026

- ❖ India's textile and apparel exports fell 1 per cent to \$32.88 Billion in April - February 2026, with apparel up 0.51 per cent and textiles down 2.17 per cent.
- ❖ February saw both apparel and textile drops.
- ❖ Imports of raw cotton surged 60.82 per cent, highlighting rising dependency.
- ❖ T & A share in India's exports declined to 8.16 per cent in April - February 2026.

India's textile and apparel (T&A) exports fell by 1 per cent to \$32.88 Billion during the period April - February 2026. Of the total, apparel exports increased marginally to 0.51 per cent to \$14.53 Billion, while textile exports declined by 2.17 per cent to \$18.35 Billion in April-February 2026.

In February 2026, apparel exports declined by 8.60 per cent to \$1.40 Billion, from \$1.53 Billion in February 2025. At the same time textile exports fell by 0.31 per cent to \$1.67 Billion from \$1.68 Billion. The share of T&A in India's total

merchandise exports fell to 8.16 per cent during April - February 2026 according to the trade data released by the Ministry of Commerce and Industry.

Within the textile segment, exports of cotton yarn, fabrics, made-ups and handloom products fell by 3.24 per cent to \$10,584.05 Million during the period of April - February 2026. Exports of man-made yarn, fabrics and made-ups stood at \$4,452.96 Million. In February 2026, exports of cotton yarn, fabrics, made-ups and handloom products fell by 1.31 per cent to \$968.82 Million, while exports of man-made yarn, fabrics and made-ups stood at \$397.03 Million.

Imports of raw cotton and waste surged by 60.82 per cent to \$1,833.76 Million during April-February 2026, compared to \$1,140.28 Million in the same period of the previous fiscal. Imports of textile yarn, fabrics, and made-ups rose by 5.31 per cent, from \$2,282.25 Million to \$2,403.51 Million.

Productivity Audit Services

SIMA Industrial Engineering Division offers tailor-made Productivity Audit services to textile mills to improve quality and to optimise productivity and cost of production by observing the working conditions and data collected from them. Productivity Audit Report would identify and suggest ways and means of improvement in various systems and procedures to optimise the utilisation of resources like manpower, machinery, materials and also identify the training needs. Interested member mills are requested to contact the Industrial Engineering Division of the Association.

Foreign Trade Performance

Table - 1 : Quick Estimates for Selected Major Commodities

Exports (Million USD)	Apr - Feb 2025	Apr - Feb 2026	% Change
Cotton Yarn / Fabrics / Made-ups, Handloom Products etc	10,938.42	10,584.05	-3.24
Man-made Yarn / Fabrics / Made-ups etc.	4,433.85	4,452.96	0.43
RMG of all Textiles	14,458.02	14,531.65	0.51
Jute Manufacturing Floor Covering	349.51	330.51	-5.43
Carpet	1,403.69	1,336.96	-4.75
Handicrafts excluding handmade carpet	1,636.40	1,650.95	0.89

Imports (Million USD)	Apr - Feb 2025	Apr - Feb 2026	% Change
Cotton Raw & Waste	1,140.28	1,833.76	60.82
Textile yarn Fabric, Made-up articles	2,282.25	2,403.51	5.31

Source : DGCIS / MOC

Commodity Group wise Performance (FTPA)

According to the Foreign Trade Performance Analysis of principal commodities data released by the Department of Commerce, the country's total exports stood at USD 366 Billion during April-January 2026, 2 per cent higher than corresponding period of the previous fiscal of USD 359 Billion. At the same time, the country's import had increased at a faster rate during the

period. Country's total import during the period has been estimated at USD 650 Billion, 7 per cent higher than corresponding period import of USD 606 Billion in the previous fiscal.

As far as the export of textile & allied products are concerned, while their export during April-January 2026 had marginally declined by 0.17 per cent, their import increased by 19 per cent over previous year corresponding period.

SIMA Placement Services

SIMA Placement Cell helps member mills in sourcing and selecting suitable candidates for different positions. SIMA would use its wide contacts, data bank and also release advertisements, if mill desires. Please send your requirements to

legal@simamills.org

Foreign Trade Performance

Table - 2 shows comparison of provisional on item wise export of commodities under textiles & allied products category during April - January 2026 with corresponding period export in the previous year.

Table - 3 shows comparison of item wise import of commodities under textiles & allied products category during April - January 2026 with corresponding period Import in the previous year.

India's export of items covered under HS Codes 50 to 63

- ❖ India's export of cotton products covered under HS Code 52 during December 2025 stood at USD 532.26 Million, as against the previous year same time export level of USD 567.37 Million.
- ❖ At the same time, export of Man-made filaments during the period stood at USD 154.02 Million, rose by 5 per cent compared to previous year export level of USD 147.05 Million.
- ❖ Manmade staple fibres covered under HS Code 55 stood at USD 146.56 Million as against its previous year export level of USD 135.82 Million
- ❖ Exports of garments covered under HS Code 62 during the period stood at USD 815.74 Million which is increased by 6 per cent when compared to previous year same time export level of USD 766.39 Million.
- ❖ Made-ups exports covered under HS Code 63 reduced by 4 per cent during the period.

HS Code wise Performance

Export & Import Quantum - December 2025

- ❖ Export of cotton covered under HS Codes 5201-5203 during the period December 2025 stood at 33.06 Million kgs, declined by 25 per cent as against previous year same time export level of 44.34 Million kgs. At the same time, its imports during the period stood at 265.73 Million kgs, Significantly higher than previous year same time import level of 77.25 Million kgs.
- ❖ Export of cotton yarn of all types covered under HS Codes 5204 to 5207 during the period stood at 107.55 Million kgs, which is 5 per cent higher than the previous year same time export level of 102.40 Million kgs.
- ❖ Export of woven fabrics containing cotton covered under HS Codes 5208 to 5212 during the period stood at 214.21 Million square metres.

Export and Import Value - December 2025

- ❖ Export of cotton in all forms covered under HS Codes 5201 to 5203 during December 2025 stood at USD 50.76 Million, fell by 32 per cent as against the previous year same time export level of USD 75.17 Million. At the same time its import during the period stood at USD 446.44 Million which is significantly higher than the previous year import level of USD 142.88 Million.
- ❖ Export of cotton yarn of all types covered under HS Codes 5204 to 5207 during the

Foreign Trade Performance

Table - 2 : Export of commodities under Textiles & Allied Products Group (USD Million)

Commodity	Apr - Jan 2025	Apr - Jan 2026	% Growth
Textiles & Allied Products	29,794.98	29,743.98	-0.17
Manmade Staple Fibre	354.22	320.68	-9.47
Cotton Yarn	2,939.41	2,775.52	-5.58
Cotton Fabrics, Made-ups Etc.	5,781.35	5,595.55	-3.21
Other Textile Yarn, Fabric Made-up Articles	764.08	793.65	3.87
Silk, Raw	2.92	0.38	-87.03
Natural Silk Yarn, Fabrics, Made-ups	107.00	192.51	79.92
Manmade Yarn, Fabrics, Made-ups	4,036.64	4,055.93	0.48
Wool, Raw	0.39	0.49	23.27
Wollen Yarn, Fabrics, Made-ups, etc.	133.14	144.02	8.17
RMG Cotton Including Accessories	7,532.38	7,852.15	4.25
RMG Silk	68.92	63.13	-8.41
RMG Manmade Fibres	2,259.29	2,175.81	-3.70
RMG Wool	146.35	158.74	8.47
RMG of Other Textile Material	2,916.16	2,878.88	-1.28
Coir And Coir Manufactures	330.12	553.52	67.67
Handloom Products	117.65	129.83	10.35
Silk Waste	27.64	29.57	6.98
Jute, Raw	12.38	21.00	69.56
Jute Yarn	13.84	14.50	4.77
Jute Hessian	85.17	95.22	11.80
Floor Covering of Jute	77.09	64.17	-16.75
Other Jute Manufactures	143.49	129.39	-9.83
Carpet (Excluding Silk) Handmade	1,249.09	1,177.98	-5.69
Silk Carpet	35.73	45.46	27.24
Cotton Raw Including Waste	660.52	475.92	-27.95

Source : MOC

Foreign Trade Performance

Table - 3 : Import of commodities under Textiles & Allied Products Group (USD Million)

Commodity	Apr - Jan 2025	Apr - Jan 2026	% Growth
Textiles & Allied Products	7,468.66	8,888.81	19.01
Manmade Staple Fibre	406.59	485.74	19.47
Cotton Yarn	20.55	25.53	24.27
Cotton Fabrics, Made-ups Etc.	546.25	542.80	-0.63
Other Textile Yarn, Fabric Made-up Articles	1,112.01	1,141.75	2.67
Silk, Raw	100.98	125.31	24.10
Natural Silk Yarn, Fabrics, Made-ups	49.03	50.89	3.81
Manmade Yarn, Fabrics, Made-ups	2,283.57	2,772.33	21.40
Wool, Raw	176.45	195.26	10.66
Wollen Yarn, Fabrics, Made-ups, etc.	94.21	107.12	13.70
RMG Cotton Including Accessories	657.66	627.99	-4.51
RMG Silk	5.20	6.57	26.37
RMG Manmade Fibres	490.92	594.62	21.13
RMG Wool	30.89	22.30	-27.82
RMG of Other Textile Material	199.69	178.01	-10.86
Coir And Coir Manufactures	3.83	4.79	24.98
Handloom Products	1.75	3.42	95.12
Silk Waste	1.42	1.51	6.63
Jute, Raw	69.40	40.10	-42.23
Jute Yarn	48.16	43.52	-9.64
Jute Hessian	34.27	44.74	30.56
Floor Covering of Jute	0.34	0.19	-45.65
Other Jute Manufactures	66.37	56.22	-15.30
Carpet (Excluding Silk) Handmade	28.41	24.68	-13.11
Silk Carpet	0.29	0.15	-49.81
Cotton Raw Including Waste	1,040.41	1,793.25	72.36

Source: MOC

Foreign Trade Performance

period was valued at USD 298.72 Million, 4 per cent lower than previous year same time export level of USD 309.57 Million. Its import stood at USD 3.59 Million during December 2025.

- ❖ Export of woven fabrics of containing cotton covered under HS Codes 5208 to 5212 during the period was valued at USD 182.80 Million as against previous year export level of USD 182.62 Million. At the same time its import stood at USD 15.27 Million.

during Apr - Dec 2025 compared to the same period in 2024.

- ❖ Bangladesh, the top export destination, saw a significant decline of 14%.
- ❖ Major declines were observed in:
 - ❖ Vietnam (62%)
 - ❖ Indonesia (15%)
 - ❖ Thailand (13%)
- ❖ Among the top 5, only China recorded massive growth.

India's export of Cotton - Top 10 Countries

- ❖ India's cotton exports observed a 17% decline

Table - 4 shows the details of cotton export to major countries in quantitative terms.

Table - 4 : Cotton Export-Major Countries (5201)

(Actual Quantity)

S.No.	Country	Apr - Dec 2024	Apr - Dec 2025	% Growth
1	Bangladesh PR	19,75,66,325	16,93,60,804	-14
2	China P RP	22,72,796	98,26,471	332
3	Vietnam Soc Rep	1,71,57,052	64,50,123	-62
4	Indonesia	70,52,351	59,67,399	-15
5	Thailand	7,07,290	6,18,194	-13
TOTAL		23,26,09,353	19,32,88,120	-16.9

Source : MoC

News Snippets

SITRA in Coimbatore to set up lab for sportswear, athleisure wear

- ❖ The South India Textile Research Association (SITRA) in Coimbatore will set up a laboratory soon to test fabrics used to make garments for sports and athletics (sportswear and athleisure).
- ❖ The Tamil Nadu Government announced in its Interim Budget for 2026-27 that it will give Rs.6 crore to SITRA to set up a laboratory.

Foreign Trade Performance

Cotton Yarn Export - Major Countries

- ❖ India's cotton yarn exports recorded a marginal growth of 0.2%, during Apr - Dec 2025 compared to the same period in 2024, rising from 793 Million kgs to 794 Million kgs.
- ❖ Bangladesh remained the largest importer, registering a decline of 8%.
- ❖ Strong growth was observed in:
 - ❖ Egypt: up by 91%
 - ❖ China P Rp: up by 47%
- ❖ Several Major markets witnessed sharp declines:
 - ❖ Vietnam (21%)
 - ❖ Turkey (19%)

- ❖ Sri Lanka Dsr (14%)
- ❖ Korea Rp (8%)

Table - 5 shows the details of cotton yarn export to major countries in quantitative terms.

Cotton Import - Major Countries

- ❖ India's cotton imports surged expressively rising from 25 lakh bales in Apr - Dec 2024 to 53 lakh bales in Apr - Dec 2025.
- ❖ Australia remained the leading supplier of cotton.

Table - 6 shows the details of India's Import of cotton from major countries in quantitative terms.

Table - 5 : Export of Cotton Yarn (5205)

(Actual Quantity)

S.No.	Country	Apr - Dec 2024	Apr - Dec 2025	% Growth
1	Bangladesh PR	40,07,49,256	36,73,83,894	-8
2	China P RP	6,46,59,178	9,53,59,713	47
3	Egypt A RP	3,25,36,676	6,21,98,331	91
4	Peru	3,86,60,141	4,24,02,323	10
5	Vietnam Soc Rep	3,64,93,305	2,88,11,133	-21
6	Portugal	2,75,15,826	2,65,51,562	-4
7	Colombia	2,28,33,034	2,15,30,963	-6
8	Korea RP	1,90,72,936	1,76,20,862	-8
9	Sri Lanka DSR	1,52,46,215	1,31,42,685	-14
10	Turkey	1,01,04,187	81,73,690	-19
	TOTAL	79,27,38,123	79,43,57,251	0.2

Source : MoC

Foreign Trade Performance

Table - 6 : Import of Cotton (5201)

(Actual Quantity)

S.No.	Country	Apr - Dec 2024	Apr - Dec 2025
1	Australia	10,94,83,889	19,73,80,753
2	Brazil	4,75,93,697	19,71,38,419
3	U S A	5,89,88,514	16,88,73,544
4	Mali	2,55,96,123	8,40,98,591
5	Singapore	1,50,43,895	5,44,79,978
6	Switzerland	2,20,57,988	4,13,71,599
7	Tanzania Rep	1,41,17,177	2,99,05,558
8	Egypt A Rp	2,76,86,647	1,95,84,396
9	Cote D' Ivoire	2,43,80,856	1,68,80,513
10	Togo	1,44,04,792	1,34,40,632
	Total	41,97,84,184	89,37,63,453

Source : MoC

Techno Facts Benchmarking Survey

SIMA conducts this benchmarking survey on a monthly basis by collecting key performance indicators from mills. Processed report showing the position (rank) of these performance indicators and countwise production among participating mills are sent to the participating mills. The Report helps mills in taking corrective actions in improving productivity and better utilisation of factors of production.

For participating in the Survey please feel free to contact -

SIMA Industrial Engineering Division

*The Editor is in no way responsible for the views expressed by the authors / advertisers
and for verification of various articles appearing in this issue.*

The material can be reproduced from the Magazine with due acknowledgment.

Index of Industrial Production

India's IIP Growth records notable 7.8% growth in December 2025

India's industrial production growth in December 2025 registered a 7.8% year-on-year increase according to data released by the Ministry of Statistics and Programme Implementation (MoSPI).

The manufacturing sector was a major contributor to this growth, recording a strong 8.1% year-over-year increase. The mining sector experienced a notable growth of 6.8% and electricity generation saw a rise of 6.3% during the same period.

The General Index of Industrial Production (IIP) for December 2025 stood at 170.3, compared to 158.0 in December 2024. Sector-wise, the indices were recorded at 153.0 for Mining, 169.9 for Manufacturing, and 204.9 for Electricity. This indicates balanced growth across mining, manufacturing and electricity, contributing to the overall improvement in industrial performance. The increase also reflects stronger economic activity and higher production levels during the period.

Within the manufacturing sector, 16 out of the 23 industry groups posted positive year-on-year growth.

Major contributors included the Manufacture of computer, electronic and optical products, which saw a 34.9% increase. The Manufacture of motor vehicles, trailers and semi-trailers followed with a 33.5% rise, while the

manufacture of other transport equipment grew by 25.1%.

The index of manufacturing of wearing apparel stood at 109.5 points during December 2025, reflecting a rise of 4% comparing to the previous month index of 105.3. At the same time, the manufacture of textiles reflected a growth of 1.3%, with the index climbing to 111.4 points from 110.0 points in November 2025 index.

The manufacture of textiles showed a year-on-year decline, with the index fell to 111.4 from 114.2 in December 2024, reflecting a dip of 2.5%. The manufacture of wearing apparel registered a decline of 8.1%, with the index fell to 109.5 from 119.1 in the same period last year.

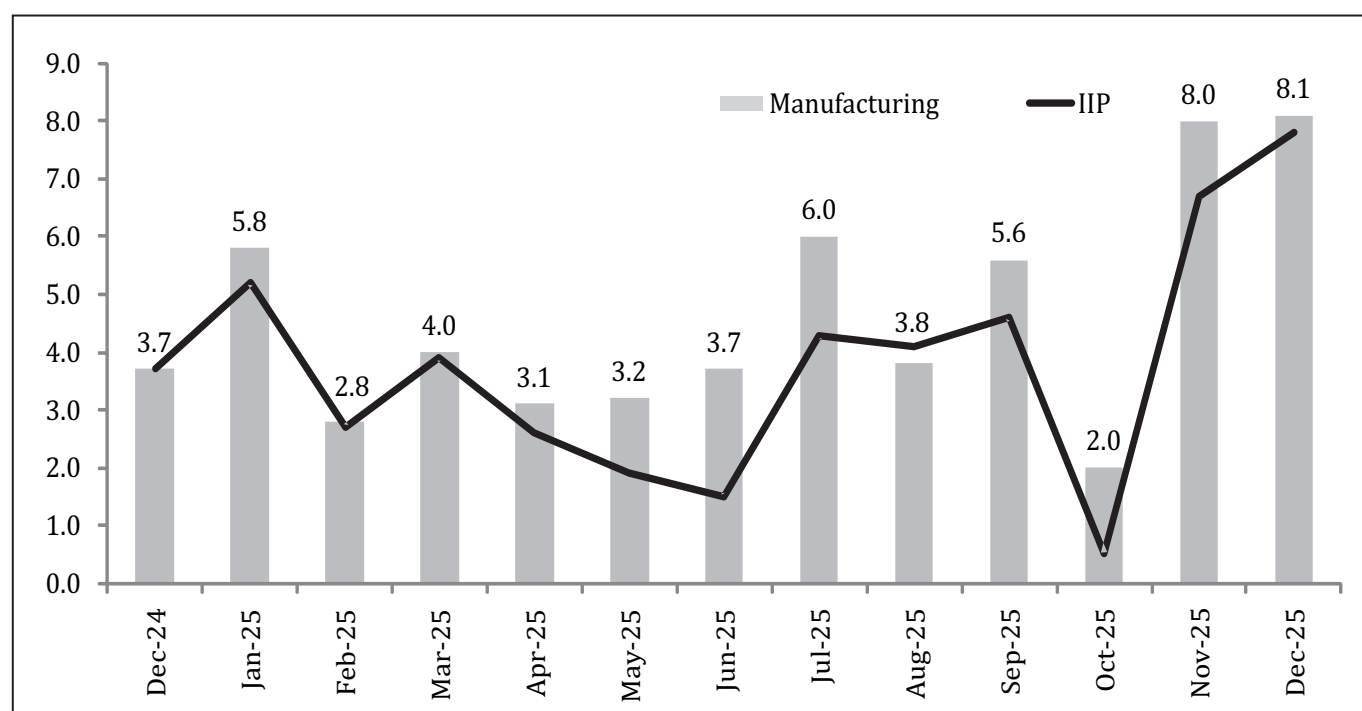
India's industrial performance increased year on year in December 2025, boosted by robust growth in the manufacturing, mining and electricity sectors. The textile and apparel industries showed mixed trends, while a number of manufacturing sectors, including electronics and automobiles, saw notable development. On a monthly basis, textiles and wearing apparel showed a little recovery, but compared to the same period last year, they showed a decline, suggesting continued difficulties. Overall, even though industrial activity has generally improved, the textile and clothing industry's performance indicates that more demand and support are needed to increase its contribution to industrial growth.

Index of Industrial Production

Table - 1 : Component-wise breakup of IIP Growth (%)

Sectoral	Aug '25	Sep '25	Oct '25	Nov '25	Dec '25
Mining & quarrying	6.6	-0.4	-1.8	5.8	6.8
Manufacturing	3.8	5.6	2.0	8.5	8.1
Electricity	4.1	3.1	-6.9	-1.5	6.3
Primary goods	5.4	1.3	-0.6	2.2	4.4
Capital goods	4.5	5.4	2.1	10.1	8.1
Intermediate goods	5.2	6.3	2.5	7.4	7.5
Infrastructure/construction goods	10.4	10.6	7.1	13.0	12.1
Consumer durables	3.5	10.0	-1.3	11.2	12.3
Consumer non-durables	-6.4	-0.3	-5.2	8.0	8.3
Overall IIP	4.1	4.6	0.5	7.2	7.8

Exhibit - 1 : Index of Industrial Production (Y-o-Y%)



Index of Industrial Production

Table - 2 : Index of Industrial Production (Base 2011-12 =100)

NIC 2008	Description	Weights	Dec. 2024	Dec. 2025	% Change
10	Manufacture of food products	5.3025	154.2	166.5	8.0
11	Manufacture of beverages	1.0354	104.2	102.9	-1.2
12	Manufacture of tobacco products	0.7985	88.2	104.5	18.5
13	Manufacture of textiles	3.2913	114.2	111.4	-2.5
14	Manufacture of wearing apparel	1.3225	119.1	109.5	-8.1
15	Manufacture of leather and related products	0.5021	89.2	87.7	-1.7
16	Manufacture of wood and products of wood and cork, except furniture; manufacture of articles of straw and plaiting materials	0.1930	115.0	119.8	4.2
17	Manufacture of paper and paper products	0.8724	76.9	81.6	6.1
18	Printing and reproduction of recorded media	0.6798	89.9	94.7	5.3
19	Manufacture of coke and refined petroleum products	11.7749	147.4	146.8	-0.4
20	Manufacture of chemicals and chemical products	7.8730	131.0	132.4	1.1
21	Manufacture of pharmaceuticals, medicinal chemical and botanical products	4.9810	259.1	285.4	10.2
22	Manufacture of rubber and plastics products	2.4222	107.0	112.4	5.0
23	Manufacture of other non-metallic mineral products	4.0853	157.7	176.6	12.0
24	Manufacture of basic metals	12.8043	236.8	266.9	12.7
25	Manufacture of fabricated metal products, except machinery and equipment	2.6549	107.4	116.1	8.1
26	Manufacture of computer, electronic and optical products	1.5704	115.1	155.3	34.9
27	Manufacture of electrical equipment	2.9983	163.9	144.8	-11.7
28	Manufacture of machinery and equipment n.e.c.	4.7653	127.5	137.0	7.5
29	Manufacture of motor vehicles, trailers and semi-trailers	4.8573	116.0	154.9	33.5
30	Manufacture of other transport equipment	1.7763	142.2	177.9	25.1
31	Manufacture of furniture	0.1311	239.0	243.3	1.8
32	Other manufacturing	0.9415	77.9	66.3	-14.9
	<i>Mining</i>	<i>14.3725</i>	<i>143.2</i>	<i>153.0</i>	<i>6.8</i>
	<i>Manufacturing</i>	<i>77.6332</i>	<i>157.2</i>	<i>169.9</i>	<i>8.1</i>
	<i>Electricity</i>	<i>7.9943</i>	<i>192.8</i>	<i>204.9</i>	<i>6.3</i>
	<i>General</i>	<i>100.0000</i>	<i>158.0</i>	<i>170.3</i>	<i>7.8</i>

Global 2025 - 26 Cotton Ending Stocks at Highest Level Since 2019-20

The latest U.S. Department of Agriculture (USDA) cotton projections for 2025-26 (August-July) forecast on global ending stocks are expected to increase by nearly 4% above last year and the highest in last 6 years. The stock increase is a result of year on year relatively unchanged world mill use and an increase in global cotton production. Cotton stocks are forecast to increase for each of the top four producing countries in 2025-26.

Global production is projected to increase 2%, the second-highest total in over a decade. World cotton mill use is estimated to decrease marginally by 0.3% from the previous year. A slight (2%) decline in global harvested area is expected to more than offset by an increase in the global yield this season. The world cotton yield is projected to reach a new record, with the 2025-26 yield increasing 4% from last year's record to 893 kilograms (kg) per hectare.

World Cotton Mill Use Growth Flat in 2025-26

Global cotton mill use in 2025-26 is forecast to remain relatively flat compared with the previous year. Cotton mill use continues to be concentrated among a few countries, with China and India accounting for 54% of global mill use in 2025-26 and the top five countries contributing more than 75% of the world total. In 2025-26, a modest increase is expected for China, a slight decline is

projected for Pakistan, Bangladesh and Turkey, while mill use in India and Vietnam remains unchanged from last season.

World cotton trade is projected to rise this season, largely the result of increased import demand by India and China. In 2025-26, China's imports are projected to increase by 8% but well below the 2023-24 record import. For 2025-26, Vietnam is projected to edge out Bangladesh as the leading cotton importer.

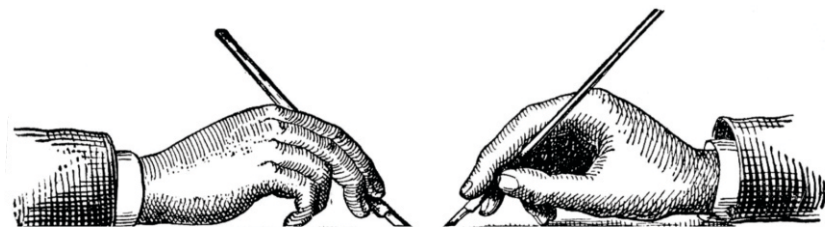
Vietnam's imports are expected to account for 18% of the world total. Bangladesh import is projected to decline 2%. Based on the latest cotton supply and demand projections, world cotton stocks increased this month and are forecast approximately 3.5% higher in 2025-26, the highest in last 6 years. For most of the major producing countries, 2025-26 ending stocks are forecast to increase, with stocks in Brazil, India and the United States rising nearly 47%, 12% and 10% respectively.

With continued world economic uncertainty surrounding cotton demand and this season's rising global stocks and stock-to-use ratio forecast, the 2025-26 world cotton price (Cotlook A Index) is projected to decline for the fourth consecutive season to average below 80 cents per pound according USDA March report on Cotton: World Markets and Trade.

The Editor is in no way responsible for the views expressed by the authors / advertisers and for verification of various articles appearing in this issue.

The material can be reproduced from the Magazine with due acknowledgment.

Editorials



Labour-intensive textile sector, MSMEs to get new schemes

Labour-intensive textile and apparel and Micro, Small and Medium-scale Enterprise (MSME) sector impacted by geopolitical developments in the last two years received a boost from the Budget with new schemes and higher allocations.

The textile sector will see almost a 25% jump in budgetary allocation for 2026- 2027 from the current financial year while the MSME sector will see doubling of allocation. Hon'ble Union Finance Minister Smt Nirmala Sitharaman said Central Public Sector Enterprises would establish high technology tool rooms in two locations as digitally enabled automated service bureaux that locally design, test and manufacture high-precision components at scale and at lower cost.

A Scheme for Enhancement of Construction and Infrastructure Equipment would be introduced to boost local manufacturing of high-value and technologically-advanced equipment.

For the labour-intensive textile sector,' the government proposed comprehensive measures that would include a special

programme to promote sports goods, a National Fibre Scheme for man- made fibre, silk, wool, etc., mega textile parks developed on challenge mode for value addition to technical textiles, a Textile Expansion and Employment Scheme to modernise traditional clusters with capital support for machinery, technology upgradation and common testing and certification centres.

A National Handloom and Handicraft programme would ensure targeted support for weavers and artisans, Mahatma Gandhi Gram Swaraj initiative would boost khadi, handloom and handicraft, Tex-Eco Initiative would promote globally competitive and sustainable textiles and apparel and Samarth 2.0 would upgrade the textile skilling ecosystem. Under rejuvenation of legacy industrial clusters, the budget proposed a scheme to revive 200 legacy industrial clusters, create dedicated Rs.10,000 crore SME Growth Fund to create future champions and top up the Self-Reliant India Fund set up in 2021 with Rs.2,000 crore to enable micro units access risk capital. The

TReDS (Trade receivables discounting scheme) would be a mandatory settlement transaction platform for all purchases from MSMEs by CPSES. A credit guarantee support mechanism

Gleanings from the Press

would be introduced through CGTMSE for invoice discounting on TReDS platform; GeM would be linked with TReDS and TReDS receivables would be introduced as asset-backed securities, helping develop a secondary market.

The Hindu 02.02.2026

Zero duty on ELS cotton to boost textiles exports: CAI

The Centre's decision to move extra long staple (ELS) cotton to the First Schedule, effectively reducing customs duty to zero, is expected to boost India's high-value textile and apparel exports, according to the trade body Cotton Association of India (CAI). The decision was announced in the Budget FY2027.

Mr Vinay N Kotak, Chairman, CAI, said the Budget is designed as a futuristic, growth-oriented blueprint, aimed at establishing India as a global manufacturing hub and securing its position as the world's third largest economy.

"One of the important changes in the Customs Schedule, which is aimed at providing relief to enable manufacturing is to move ELS to First Schedule. This will boost exports of our finished textile products and increase India's share in the world textile markets," he said in a statement. India imports around 5-7 lakh bales (of 170 kg) of ELS cotton, mainly from the US and Egypt, he added.

Business Line 07.02.2026

US deal, FTAs likely to stitch new growth story for textiles

The United States (US) agreed to slash tariffs on Indian goods to 18 per cent may give the textile and apparel sector a competitive edge over rivals such as Vietnam, China, Bangladesh, Pakistan, and Indonesia. Key free-trade agreements (FTAs) and rising US sourcing from India could lead to monthly double-digit growth in exports in 2026-27, according to industry sources.

Cost Control Study

SIMA Conducts "Cost Control Study" and works out cost of production of yarn for individual counts by critically analyzing shop floor performance, details of yarn realization, waste level in different departments, machine productivity, spindle utilization, labour engagement, units per kilogram, etc collected from mills.

The report would identify areas for cost reduction and ways and means of reducing the cost. The report would also give information on various textile industry standards on productivity and productivity levels possible for the mills to attain along with data on mills with high productivity.

Interested mills are requested to contact the Association for more details.

Gleanings from the Press

The US tariff decision lined up several measures to support expected demand uptick in the sector. At nearly \$11 billion, India's exports of textile and apparel products to the US accounted for close to 28 per cent of the country's total exports in this category during FY25. "This is a huge positive for the Indian textile and clothing industry. From the country having the highest tariff, we are now having an advantage of being the lowest," said Mr Sanjay Kumar Jain, Managing Director of Delhi-based TT, and chairman of ICC National Textiles Committee.

Due to the increased tariff in the US market, the knitwear hub of Tiruppur has already witnessed a loss of Rs.15,000 crore in 2025. This follows closely on the heels of the EU deal, which is expected to be a game-changer for India's textile and apparel industry. The agreement will provide zero-duty access to the \$95 billion European market, where India's share stands at just 6 per cent or \$5.5 billion. Industry experts expect this to double to over \$11 billion within the next five years.

"This deal will also ensure that factories can run at full steam once more and job creation can get back to previous levels," said Mr Ashwin Chandran, Chairman, Confederation of Indian Textile Industry. He added that the deal could also play a crucial role in India's ambitious target of achieving \$100 billion worth of exports in the textile and apparel sector by 2030, from \$37.7 billion in FY25.

In December 2025, India signed the Comprehensive Economic Partnership Agreement (CEPA) with Oman. During the same

month, concluded free trade agreement negotiations with New Zealand. Earlier, in July 2025, India signed the Comprehensive Economic and Trade Agreement (CETA) with the United Kingdom.

Mr Sammir Dattani, Executive Director of Sanathan Textiles, said that as US buyers reassess and rebalance their sourcing strategies, Indian manufacturers are positioned to gain a relative advantage over competing supplier countries. "This shift is expected to translate into a steady revival in order flows, improved pricing discipline, and progressive margin stabilisation across the sector," he added.

Business Standard 04.02.2026

Textiles sector upbeat on import of US cotton

The cotton textiles industry is upbeat over the Indo-US trade deal, particularly with cotton imports likely to meet the expected demand surge for the natural fibre over the next few years.

Though details of how cotton imports would be permitted are not clear, industry leaders expect the government to either follow the Australian cotton import formula or lower duty on US cotton by 50 per cent.

However, the cotton textile industry sees a need for imports of the natural fibre at a lower cost particularly when the industry is gung-ho over the trade deal with the European Union, apart from the US.

Gleanings from the Press

"Indian cotton production has stagnated over the past couple of years. We need quality cotton besides extra- long staple to cater to the export market. Domestic cotton prices are also higher than global cotton," said Mr K Venkatachalam, advisor, Tamil Nadu Spinning Mills Association (TASMA).

"The free trade agreement with the EU and the deal with the US likely lead to demand for cotton doubling, he said. "It is possible that India may cap the import volume for duty concession at 5-10 lakh bales (170 kg). US cotton is the best in quality. It is contamination-free, and prices are low, too," said Mr Atul Ganatra, former President of Cotton Association of India (CAI).

Cotton imports may be allowed duty-free from the US. "We, however, have to see the fine print," Mr Ram Kaundinya of Federation of Seed Industry of India (FSII), said. He said cotton production in India is inadequate due to a continuous decline in yields and production in last 5-6 years. Not introducing new technologies, Pink Bollworm attacks, etc have contributed to this situation.

Business Line 10.02.2026

Cotton Corporation cuts fibre prices by up to 3% to spur sales

Amidst an easing trend in international prices, the Cotton Corporation of India (CCI) has reduced the price for the 2025-26 crop by Rs.1,400-1,700 per candy (of 356 kg) to boost sales. The State-run entity has also reduced the lifting period for buyers from 60 days to 30 days.

The correction in prices is in line with the international prices," said Mr Lalit Kumar Gupta, Chairman and Managing Director, CCI. The State-run entity had started the sale of the 2025- 26 crop on January 19,2026 and has sold about 4 lakh bales, amidst dull response from the industry.

Mr Gupta said the local arrivals were continuing and the industry will continue to buy first from the market. The daily arrivals are estimated to be between 1.25 and 1.5 lakh bales. "Our sales normally pick up after March only," he said. A sourcing agent in Raichur said the arrivals were good in Maharashtra, Gujarat and Telangana, while they were tapering in Karnataka. "The market prices are lower than the CCI price and the trade is getting its choice of cotton from the market," he said.

Meanwhile, the Cotton Association of India (CAI), which revised upwards the crop estimate for 2025-26 by around 2.5 per cent, or 7.5 lakh bales of 170 kg each, to 317 lakh bales on higher than estimated production in Maharashtra and Telangana, maintained the projections.

CAI maintained total cotton consumption during 2025-26 till September-end at 305 lakh bales against the previous year's 314 lakh bales. Till January-end, cotton consumption is estimated at 104 lakh bales, CAI President Mr Vinay N Kotak said in a statement. CAI has projected a year- end surplus 122.59 lakh bales for the 2025-26 season, up 56 per cent year-on-year on record imports of 50 lakh bales during the year. Imports till January-end stood higher at 35 lakh bales and exports at 6 lakh bales.

Gleanings from the Press

The association estimated supplies for the current season at 427.59 lakh bales compared with 392.59 lakh bales. The supply includes an opening stock of 60.59 lakh bales and is being boosted by higher imports. Cotton availability as of January-end was 316.17 lakh bales with cotton pressings estimated at 220.58 lakh bales, the opening stock and the import of 35 lakh bales. A surplus of 122.59 lakh bales is being estimated at the end of the current season in September against 78.59 lakh bales surplus at the end of the previous season. The closing stock at the end of the season is expected at 107.59 lakh bales, up 47 lakh bales from the previous season.

Business Line 11.02.2026

Tiruppur targets \$10 billion exports to Europe

India's knitwear hub Tiruppur is positioning itself for its next growth leap as free trade agreements (FTAs) with the UK and the European Union near fruition, industry leaders said.

"We have set an ambitious target of \$10 billion in apparel exports by 2030," said Mr N Thirukkumaran, Secretary, Tiruppur Exporters Association. India's total apparel exports currently stand at about \$16 billion, with Tiruppur alone contributing nearly \$5.2 billion-roughly a third of the country's shipments, he said.

Business Line 25.02.2026



REVIEW

In-house Journal - Rate Card

Mechanical Details

Overall Size (with Bleed)	: 21.5 cm x 28.0 cm
Printed Page (without Bleed)	: 18.0 cm x 25.0 cm
No. of Columns	: Two
Width of Columns	: 8.5 cms x 2 Columns
Printing Process	: Offset
Advertisement Material	: PDF file (Resolution 300 dpi)
Black & White Advertisement	: Original Artwork

Advertisement Rates / Insertion

Back Cover	: Rs. 10,000/- (Four Colours)
Inside Cover	: Rs. 8,500/- (Four Colours)
Full Page	: Rs. 7,000/- (Four Colours)
Half Page	: Rs. 4,000/- (Four Colours)
Half Page	: Rs. 2,500/- (Black & White)
Quarter Page	: Rs. 1,500/- (Black & White)
(Plus Taxes as applicable)	

For further details please contact:

The Southern India Mills' Association

Post Box No. 3783, 41, Race Course, Coimbatore - 641 018.

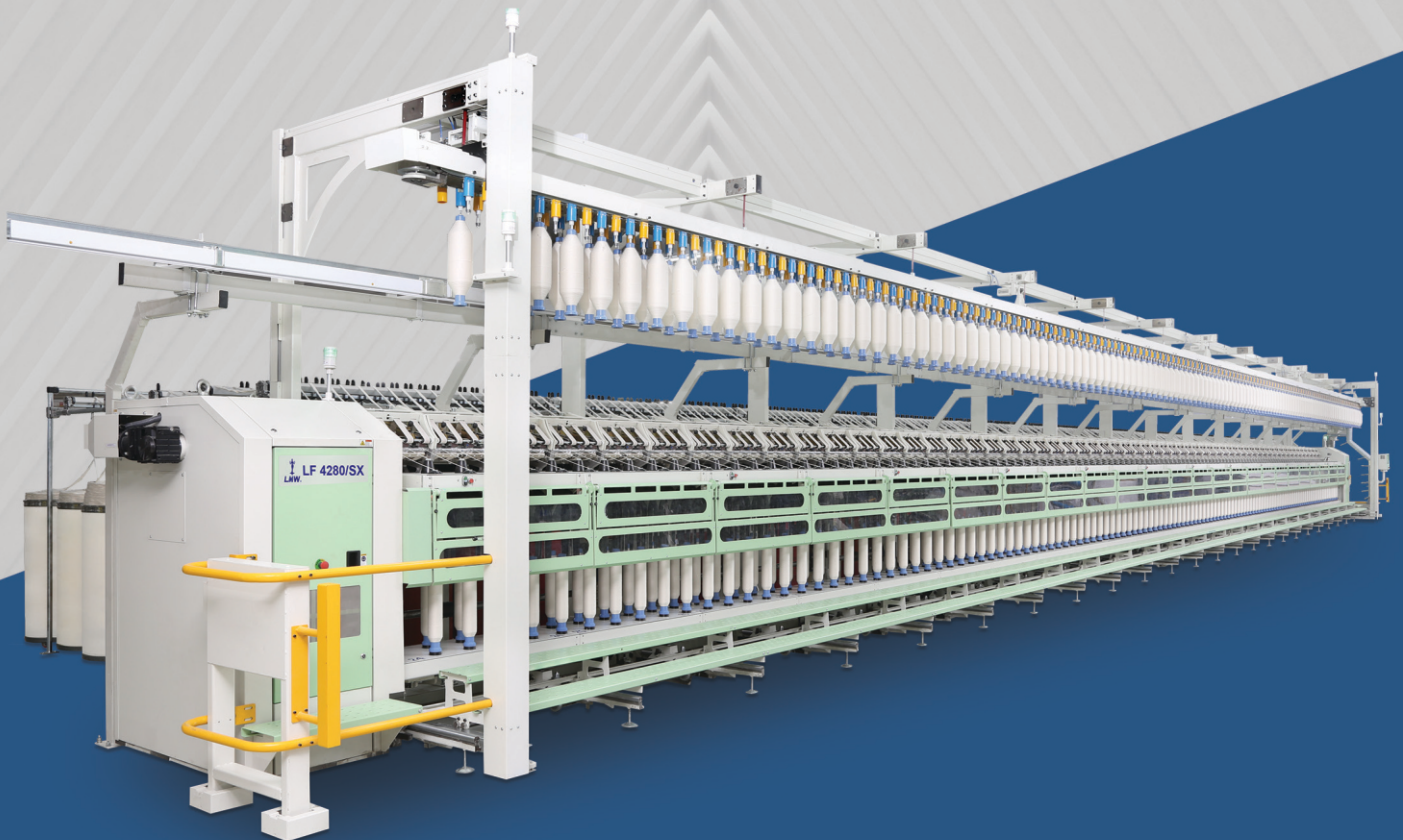
Phone : 0422 - 4225333 E-mail : info@simamills.org

4S SUSTAINABLE
SMART SOLUTIONS FOR
SPINNING
SUCCESS



Speed Frame LF 4280/SX

The Most Advanced Automated Speed Frame



Boosts efficiency, reduces manpower, and ensures superior roving quality



Modular belt drive delivers speeds up to 54 m/min for maximum output



ATC and dual drive maintain consistent, high-quality roving



Energy-saving design with 4-segment drive and Unique CQ duct

“CRAFTING FUTURE READY SPINNING MILLS”

FOLLOW US ON:



JOIN LMW SPIN SPHERE COMMUNITY FROM HERE

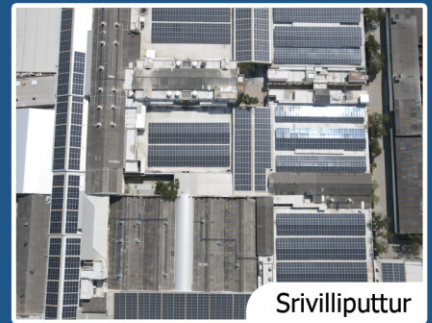
Ring Spinning System





- RESIDENTIAL
- COMMERCIAL
- INDUSTRIAL
- UTILITY

INSTALLATIONS :



**STATEWISE
SOLAR PARK
AVAILABLE**

- | CAPEX
- | OPEX
- | PPA
- | FINANCE

**EXPERTS IN
INDUSTRIAL
INSTALLATIONS**



*Terms & Conditions Apply

+91 80016 12345 | epc@evolveindia.in | www.evolveenergygroup.com